

Data Table

Field name: Field Size (ha): Date:.....

Crop: Was straw retained? YES/NO

Tillage ? PLOUGH/MINTILL/NOTILL/Other.....

Cover crop prior? YES/NO

Manure/compost etc. this year?YES/NO

System: Conventional/Organic/Other.....

	1	2	3	4	5
Large vertical burrows or middens present?					
Total number of juvenile AND adult worms					
Total number of adult surface worms					
Total number of adult topsoil worms					
Total number of adult deep burrowers					

Please enter your data at www.wormscience.org for results analysis

Middens and vertical burrows



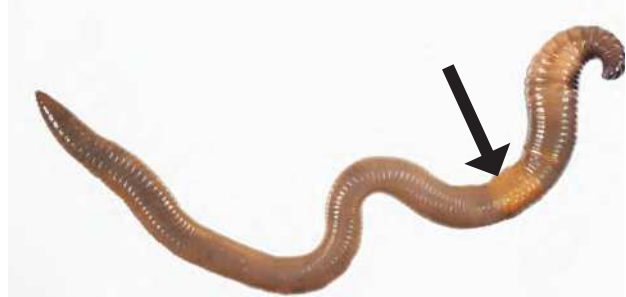
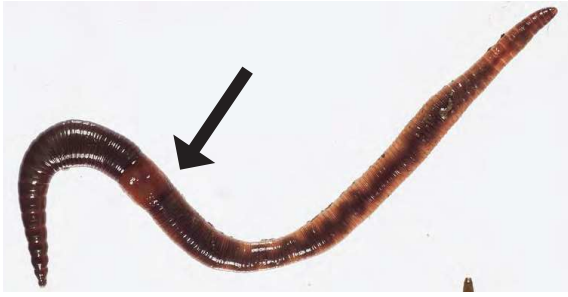
Pencil size vertical burrow with root



Midden made by a deep burrowing earthworm. This is a pile of straw or stones overlying a permanent burrow.



Adult earthworms: Look for the saddle



If there is no obvious saddle, it is a juvenile earthworm which cannot be identified

Three types of earthworms in farmland soils:

Surface worms



Small (matchstick, < 8cm)
Red colour
Often fast moving
Lives in soil surface

Topsoil worms



Small - Medium in size
Only pink, grey or green
colour
Most common type of
worm in farmland soils
Lives in topsoil

Deep burrowers



Large (pencil, > 8cm)
Red or black head
Large vertical burrows/
middens indicate presence

Online support:

A YouTube demonstration and earthworm identification quiz is
available at www.wormscience.org

Survey updates will be available @wormscience
Questions to: jacqueline.stroud@rothamsted.ac.uk
T: + 44 (0)1582 938244

